

## Butterfly Valve, Metal

### Construction

The GEMÜ 411 manually operated 2/2 way butterfly valve has an ergonomically designed corrosion-resistant handwheel with integrated locking device.

### Features

- Suitable for inert and corrosive\* liquid and gaseous media
- Insensitive to viscous media

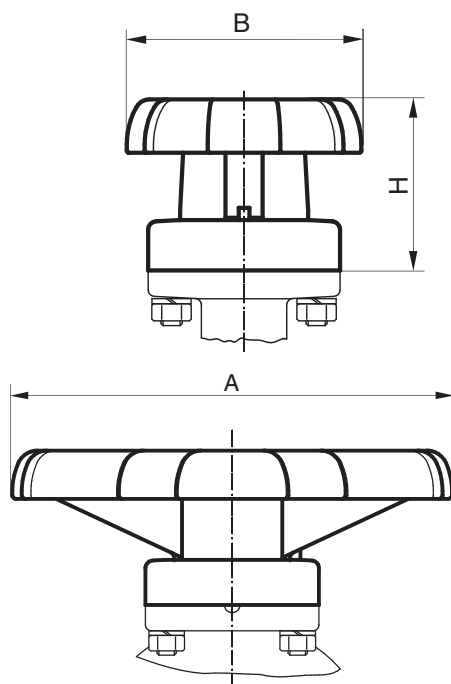
### Advantages

- Various seal materials available to suit the working medium
- Low weight
- Optional accessories
  - Stroke limiter
  - GEMÜ 1225 electrical position indicator with 2 potential-free adjustable limit switches (additional module, can be retrofitted)

\* see information on working medium on page 2



Bonnet dimensions [mm]



| DN      | A   | B  | H  |
|---------|-----|----|----|
| 15 - 25 | 118 | 55 | 42 |
| 32 - 50 | 160 | 71 | 63 |

## Technical data

| Working medium   |        |
|--|--------|
| Inert, corrosive gaseous and liquid media which have no negative impact on the physical and chemical properties of the body, disc and seal material. |        |
| Max. perm. pressure of working medium  | 10 bar |
| Max. perm. temperature of working medium   | 100° C |

| DN | Kv value [m <sup>3</sup> /h] |        | Weight [g] |        |
|----|------------------------------|--------|------------|--------|
|    | Brass                        | 1.4581 | Brass      | 1.4581 |
| 15 | 7                            | 7*     | 800        | 700    |
| 20 | 12                           | 15*    | 850        | 700    |
| 25 | 17                           | 20*    | 900        | 700    |
| 32 | 40                           | 55*    | 1050       | 800    |
| 40 | 60                           | 90*    | 1600       | 1200   |
| 50 | 100                          | 140*   | 2200       | 1600   |

\* ISO connection

## Order data

| Body configuration | Code |
|--------------------|------|
| 2/2 way            | D    |

| Valve body/disc material  | Code |
|---|------|
| MS, Brass<br>only available with threaded socket design                             | 12   |
| 1.4581, St. steel investment casting<br>only available with butt weld spigot design | 38   |

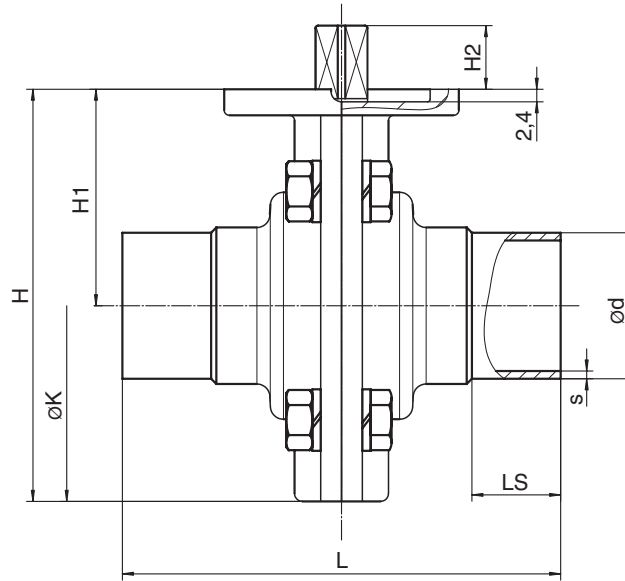
| Connections  | Code |
|--|------|
| <b>Butt weld spigots (only valve body material code 38)</b>    |      |
| Spigots DIN  | 0    |
| Spigots DIN 11850, series 1                                    | 16   |
| Spigots DIN 11850, series 2                                    | 17   |
| Spigots DIN 11850, series 3                                    | 18   |
| Spigots SMS 3008   | 37   |
| Spigots ASME BPE   | 59   |
| Spigots EN ISO 1127  | 60   |
| <b>Threaded connections (only valve body material code 12)</b> |      |
| Threaded sockets DIN ISO 228                                   | 1    |

| Seal material        | Code |
|----------------------|------|
| FPM                  | 4    |
| PSI, Silicone rubber | 9    |
| EPDM                 | 14   |

| Control function  | Code |
|-------------------|------|
| Manually operated | 0    |

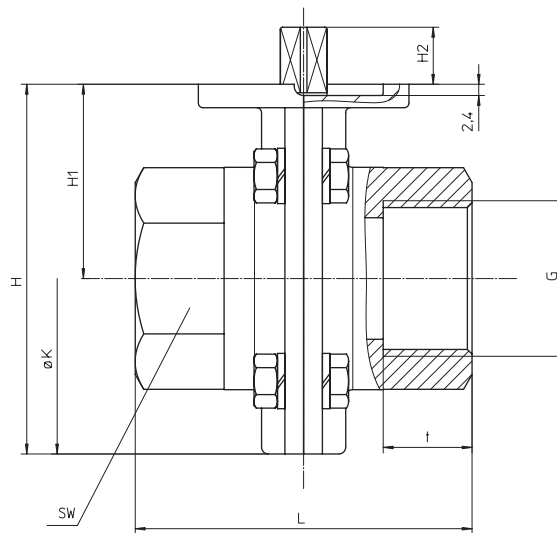
| Order data                      | 411 | 25 | D | 1 | 12 | 14 | 0 |
|---------------------------------|-----|----|---|---|----|----|---|
| Type                            | 411 |    |   |   |    |    |   |
| Nominal size                    |     | 25 |   |   |    |    |   |
| Body configuration (Code)       |     |    | D |   |    |    |   |
| Connections (Code)              |     |    |   | 1 |    |    |   |
| Valve body/disc material (Code) |     |    |   |   | 12 |    |   |
| Seal material (Code)            |     |    |   |   |    | 14 |   |
| Control function (Code)         |     |    |   |   |    |    | 0 |

Body dimensions [mm]



Butt weld spigots

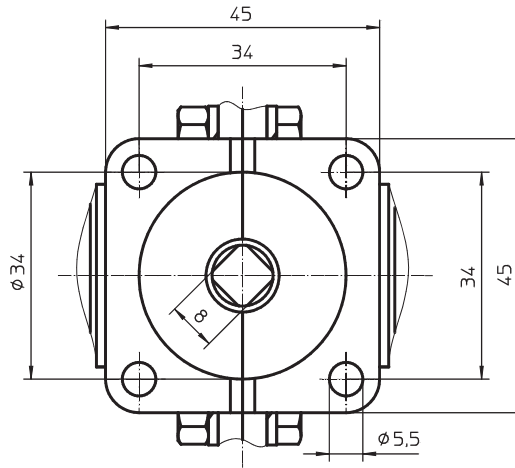
| DN | NPS    | L   | H   | H1   | H2 | øK  | LS | DIN series 0; Code 0 |     | DIN 11850 series 1; Code 16 |   |    |     | DIN 11850 series 2; Code 17 |   |      |     | SMS 3008 Code 37 |     | EN ISO 1127 Code 60 |      | ASME BPE Code 59 |   |
|----|--------|-----|-----|------|----|-----|----|----------------------|-----|-----------------------------|---|----|-----|-----------------------------|---|------|-----|------------------|-----|---------------------|------|------------------|---|
|    |        |     |     |      |    |     |    | ød                   | s   | ød                          | s | ød | s   | ød                          | s | ød   | s   | ød               | s   | ød                  | s    | ød               | s |
| 15 | 1/2"   | 80  | 79  | 41.5 | 13 | 75  | 20 | 18                   | 1.5 | 18                          | 1 | 19 | 1.5 | 20                          | 2 | -    | -   | 21.3             | 1.6 | 12.70               | 1.65 |                  |   |
| 20 | 3/4"   | 84  | 79  | 41.5 | 13 | 75  | 22 | 22                   | 1.5 | 22                          | 1 | 23 | 1.5 | 24                          | 2 | -    | -   | 26.9             | 1.6 | 19.05               | 1.65 |                  |   |
| 25 | 1"     | 84  | 79  | 41.5 | 13 | 75  | 22 | 28                   | 1.5 | 28                          | 1 | 29 | 1.5 | 30                          | 2 | 25.0 | 1.2 | 33.7             | 2.0 | 25.40               | 1.65 |                  |   |
| 32 | 1 1/4" | 88  | 91  | 48.0 | 13 | 85  | 25 | 34                   | 1.5 | 34                          | 1 | 35 | 1.5 | 36                          | 2 | 33.7 | 1.2 | 42.4             | 2.0 | -                   | -    |                  |   |
| 40 | 1 1/2" | 96  | 108 | 56.0 | 13 | 103 | 25 | 40                   | 1.5 | 40                          | 1 | 41 | 1.5 | 42                          | 2 | 38.0 | 1.2 | 48.3             | 2.0 | 38.10               | 1.65 |                  |   |
| 50 | 2      | 110 | 123 | 65.0 | 13 | 116 | 30 | 52                   | 1.5 | 52                          | 1 | 53 | 1.5 | 54                          | 2 | 51.0 | 1.2 | 60.3             | 2.0 | 50.80               | 1.65 |                  |   |



Threaded socket DIN ISO 228

| DN | G     | H   | H1   | H2 | t    | L  | øK  | SW | Number of wrench surfaces |
|----|-------|-----|------|----|------|----|-----|----|---------------------------|
| 15 | 1/2   | 79  | 41.5 | 13 | 15.0 | 72 | 75  | 27 | 6                         |
| 20 | 3/4   | 79  | 41.5 | 13 | 16.0 | 72 | 75  | 32 | 6                         |
| 25 | 1     | 79  | 41.5 | 13 | 19.0 | 72 | 75  | 41 | 6                         |
| 32 | 1 1/4 | 91  | 48.0 | 13 | 21.4 | 72 | 85  | 50 | 8                         |
| 40 | 1 1/2 | 108 | 56.0 | 13 | 21.4 | 83 | 103 | 55 | 8                         |
| 50 | 2     | 123 | 65.0 | 13 | 25.7 | 83 | 116 | 70 | 8                         |

## Bonnet mounting dimensions [mm]



### Overview of valve bodies for GEMÜ 411

| DN | Brass<br>(Code 12)           | 1.4581, Investment casting<br>(Code 38) |                                   |                                   |                                   |                     |                        |                     |
|----|------------------------------|---|-----------------------------------|-----------------------------------|-----------------------------------|---------------------|------------------------|---------------------|
|    | Threaded<br>socket<br>Code 1 | Butt weld spigots                       |                                   |                                   |                                   |                     |                        |                     |
|    |                              | DIN<br>series 0;<br>Code 0              | DIN 11850<br>series 1;<br>Code 16 | DIN 11850<br>series 2;<br>Code 17 | DIN 11850<br>series 3;<br>Code 18 | SMS 3008<br>Code 37 | EN ISO 1127<br>Code 60 | ASME BPE<br>Code 59 |
| 15 | X                            | X                                       | X                                 | X                                 | X                                 | -                   | X                      | X                   |
| 20 | X                            | X                                       | X                                 | X                                 | X                                 | -                   | X                      | X                   |
| 25 | X                            | X                                       | X                                 | X                                 | X                                 | X                   | X                      | X                   |
| 32 | X                            | X                                       | X                                 | X                                 | X                                 | X                   | X                      | -                   |
| 40 | X                            | X                                       | X                                 | X                                 | X                                 | X                   | X                      | X                   |
| 50 | X                            | X                                       | X                                 | X                                 | X                                 | X                   | X                      | X                   |

For plastic butterfly valves up to DN 250 mm and metal butterfly valves up to DN 1200 mm as well as accessories please refer to separate data sheets.  
Contact GEMÜ.



**GEMÜ**® VALVES, MEASUREMENT  
AND CONTROL SYSTEMS